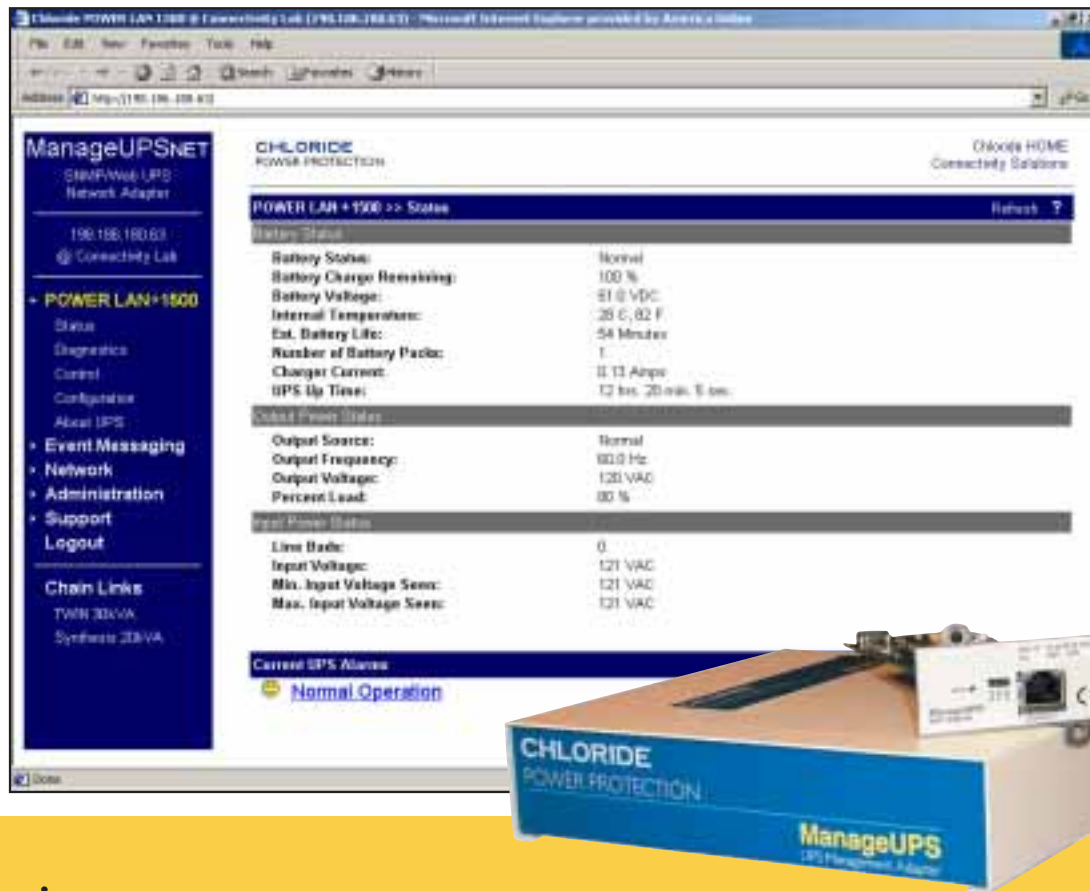


**Connectivity  
Solutions**

**CHLORIDE**  
POWER PROTECTION



# ManageUPSNET



## Overview

The ManageUPSNET Adapter provides an open approach to management of network power. ManageUPS delivers a complete set of manageability options including WEB, Telnet, and Out-Of-Band accessibility in addition to the full featured embedded SNMP agent. Event messages are offered as email as well as SNMP Traps — a truly versatile tool for managing UPS systems in a network environment.

## Key Features



- **Remote Messaging** — ManageUPS keeps you informed anywhere — fault and recovery messages are sent via SNMP Trap or email. Email contents include URL link for quick access to UPSWEB page. Many pager systems will forward email to your wireless pager — so you can be informed anywhere.
- **Remote Management: In-Band** — Site power and UPS status information can be accessed securely from any computer on your IP-based network. View UPS system status in real time for situational decision support. Access via Telnet, SNMP NMS or WEB Browser. SNMP Agent conforms to RFC1628 standard UPS MIB.
- **Remote Management: Out-Of-Band** — CONSOLE session support provides remote access via modem or terminal server to your adapter.
- **Security** — Telnet, WEB, FTP and SNMP servers can be Individually disabled. SNMP server allows IP filtering and Communities to restrict access. WEB, Telnet and FTP servers have username and password access control. WEB server uses basic HTTP authentication.
- **Serviceability** — FTP/TFTP Server - Allows firmware or configuration files to be updated over the network for simpler maintenance.
- **Network Shutdown** — ManageUPS offers two options for enabling controlled shutdown of multiple computers over a TCP/IP network. *OPTION1*: Embedded MopNET server sends UPS status to MopUPS shutdown software, running on remote computers. ManageUPS can support up to 100 MopUPS connections. *OPTION2*: Integrated "RCCMD Sender" sends shutdown commands to RCCMD "Listener" software running on remote computers, which initiates system shutdown. Up to four groups of RCCMD Listeners can be directed by ManageUPS.

# Event Messaging and Power Management

Event Messaging options let system administrators keep the user community and network support teams informed of situations that could affect resource availability.

Power Management provides historical and real time views of site power and UPS status information.

## Messaging Options

		snmp	email	email - sms	pager - dialout	network popup
<b>MopUPS</b>		✓	✓		✓	✓
<b>ManageUPS</b>		✓	✓	✓		

\* MopUPS SNMP trap option available under Windows NT/2000/XP

Messages are sent when UPS alarms are detected or MopUPS events are pending. Message recipients can be configured by the system administrator.

### Default Message Settings:

MopUPS sends network message to all users when server shutdown is imminent.

MopUPS sends all other messages only to system administrators.

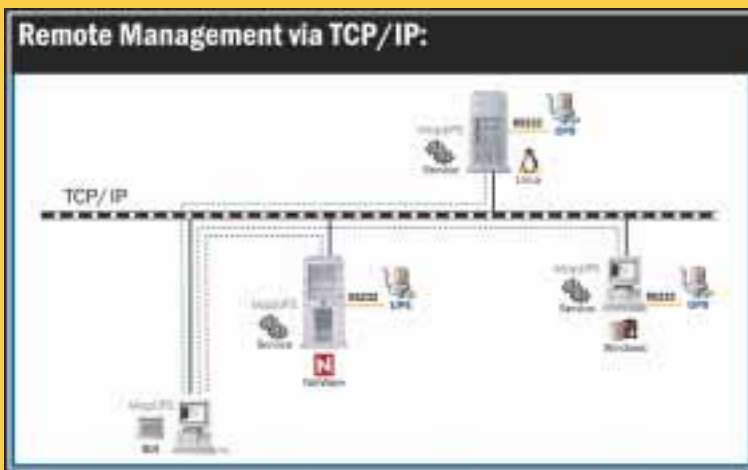
### System Requirements for Messaging:

- Email messaging requires network SMTP server
- SNMP trap require SNMPv1 compatible trap receiver.

## Management Options

### Real Time View:

MopUPS UI can access MopUPS services on remote computers to configure MopUPS messaging, event response or, view UPS status information. Access is secured by User Authentication via 128bit, MD5 encryption of user name and password



The MopUPS GUI is a 32bit application that runs on Windows 95, 98, Me, NT and 2000/XP. For Unix, the User Interface is a scriptable Command Line client.

### Historical View:

MopUPS logs all alarms and events to the event log file. Power measurements data log (CSV text format) imports easily into spreadsheets and other analytical software for analysis and graphing.

### UPS Compatibility

- EDP 70, EDP 90, EDP 90-COC
- 90NET
- TWIN, Synthesis, Linear
- Linear MKII (33)
- Linear MKII (11, 31)
- PowerLAN / PowerRack Power Station, Cool Power
- PowerLAN+/PowerRACK+
- ACTIVE / ACTIVE Rack

### ManageUPS

- AK-MUN-EE \*
- AK-MUN-90NE \*
- AK-MUN-SE \*
- AK-MUN-LM2E \*
- AK-MUN2-LM2
- AK-MUN-PE \*
- AK-MUN2-P
- AK-MUN2-A

\* AC line cord required

### MopUPS PROFESSIONAL

INTEL	RISC
SK-PROMOP-S	SK-PROMOPRU-S
SK-PROMOP-S	SK-PROMOPRU-S
SK-PROMOP-S	SK-PROMOPRU-S
SK-PROMOP-S	SK-PROMOPRU-S
SK-PROMOP-S2	SK-PROMOPRU-S2
SK-PROMOP-P	SK-PROMOPRU-P
SK-PROMOP-P2	SK-PROMOPRU-P2
SK-PROMOP-A	SK-PROMOPRU-A

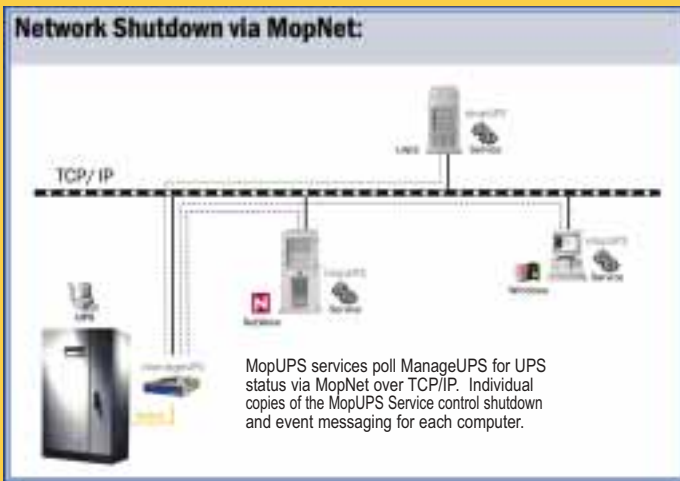
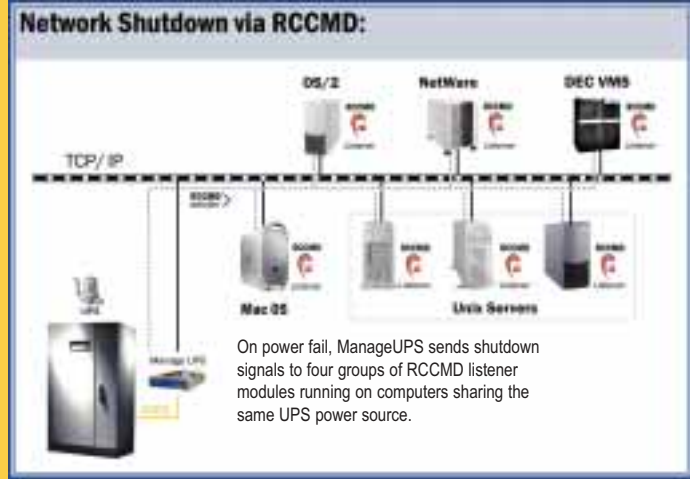
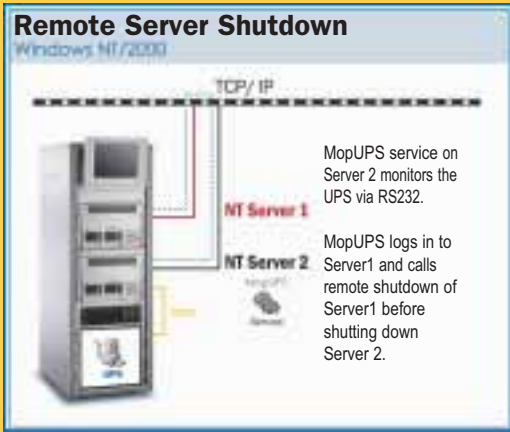
\* KITS INCLUDE Server Communication Cable

### Supported Operating Systems

- Intel-Based PC:
- Windows 95, 98, Me, NT, 2000, XP
  - NetWare 4.x, 5.1, 6.0
  - Linux (Redhat 6.x/7.x, SuSE 7.x, Hancorn 2.x)
  - Sun Solaris (2.8 and up)
  - SCO OpenServer Release 5.0.4 and up
  - Unixware 7
  - FreeBSD 4.4
- RISC Systems:
- Sun Solaris (2.5 and up)
  - HP UX 11.0
  - IBM AIX 4.3.3
  - SGI IRIX 6.5

# Safe Server Shutdown

CHLORIDE offers several options for enabling safe shutdown of multiple computers sharing a common UPS. These options can be used in any combination to provide flexibility and reliability.



## CHLORIDE Network Shutdown Advantage:

- **Flexibility** - allows individual or group shutdown schedules to accommodate power allocation priorities.
- **Reliability** - eliminates dependency on a Master computer to host UPS agent. With MopNET, Pro-active polling provides an extra level of reliability - if network communications are lost, MopUPS sends an alert and logs the event.
- **Simplicity** - lightweight self-contained implementation using TCP/IP-- no dependencies on SNMP or Java elements, eliminates compatibility issues.

### ManageUPS System Requirements

- SNMP Agent and MIB are compliant with SNMP v1 NMS.
- WEB Interface requires Netscape 3.0 or IE 3.0 and higher.
- Email messaging requires Network SMTP server.
- Network connection requires 10Base-T TCP/IP ethernet connection.
- BootP Configuration requires BootP Server.

### MopUPS System Requirements

- Installation requires user account with Administrator rights.
- Email messaging requires network SMTP server
- Serial UPS Monitoring requires dedicated computer serial port.
- Remote Monitoring requires TCP/IP

### RCCMD Supported Operating Systems:

RISC UNIX: Compaq TrueUnix 64 (Alpha), DEC Unix (Alpha), HP UX 10.X (PA-RISC), SUN Solaris 2.X (Sparc), Siemens SINIX 5.45 (RISC MIPS), IBM AIX 4.1 & 4.3

Intel: Linux, RedHat Linux v6.1, SCO OpenServer 5, UnixWare, SUN Solaris 2.X & 8, NetWare, OS/2

Other: DEC VMS, Macintosh OS 9.x

### MopUPS Extended License Kit Numbers

- |  |              |
|--|--------------|
| Intel Platforms                        | SW-PROMOP    |
| • 1 install license (on CD)            | SL-PROMOP10  |
| • 10 Install license pak (electronic)  | SL-PROMOP25  |
| • 25 Install license pak (electronic)  | SL-PROMOP50  |
| • 50 Install license pak (electronic)  | SL-PROMOP100 |
| • 100 Install license pak (electronic) |              |

### RISC UNIX

- |                                       |               |
|---------------------------------------|---------------|
| • CD w/one install license            | SW-PROMOPRU   |
| • 5 Install license pak (electronic)  | SL-PROMOPRU05 |
| • 10 Install license pak (electronic) | SL-PROMOPRU10 |
| • 25 Install license pak (electronic) | SL-PROMOPRU25 |

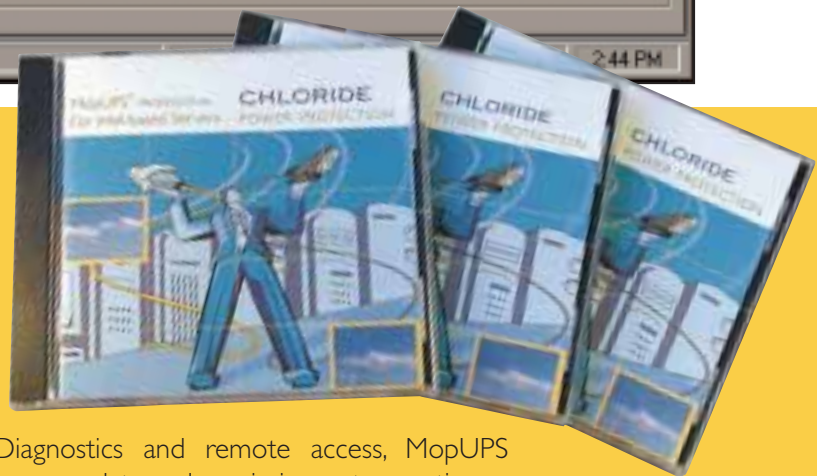
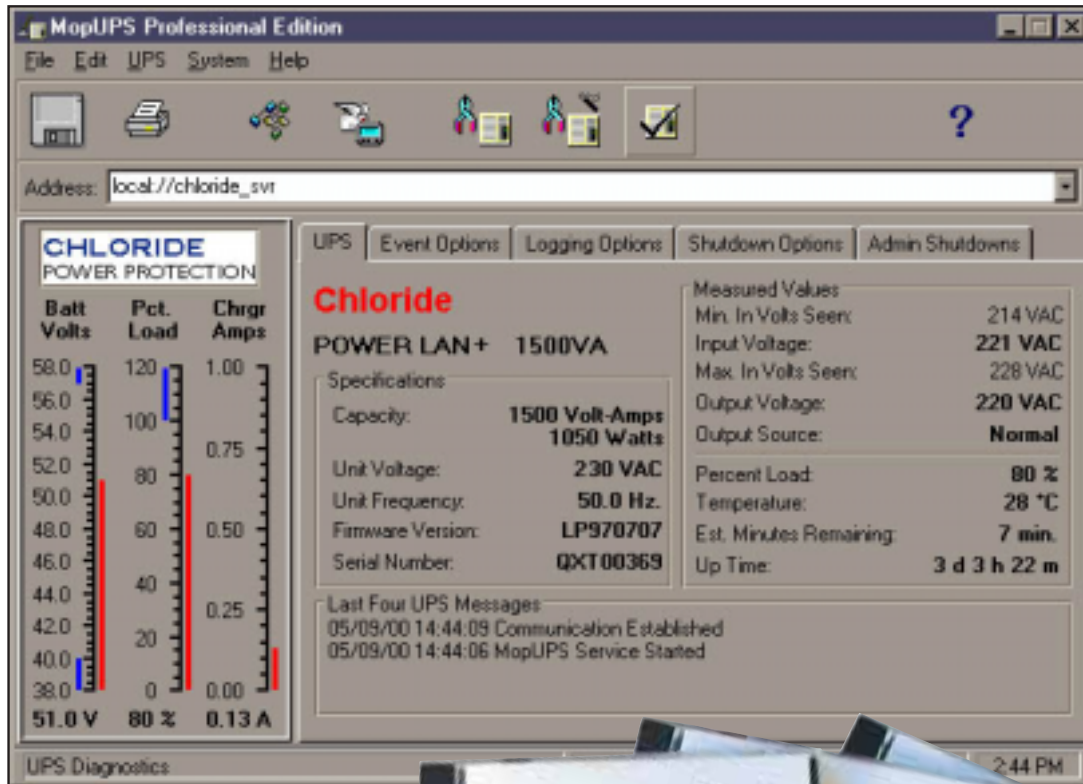
### RCCMD Kit Numbers

- |                                       |            |
|---------------------------------------|------------|
| • 1 Install license pak (electronic)  | SL-RCCMD01 |
| • 5 Install license pak (electronic)  | SL-RCCMD05 |
| • 10 Install license pak (electronic) | SL-RCCMD10 |

### DEC VMS

- |                                      |               |
|--------------------------------------|---------------|
| • 1 Install license pak (electronic) | SL-RCCMD-DV01 |
|--------------------------------------|---------------|

# MopUPS Professional



## Overview

MopUPS<sup>®</sup> Professional is software for safe system shutdown and useful power management.

With advanced features such as network shutdown, scheduled shutdown and restart, event messaging, event logging, data logging, real time viewing, UPS Diagnostics and remote access, MopUPS Professional has everything you need to preserve data and maximize system uptime.

## Key Features

- **Safe System Shutdown** — Preserve data integrity and minimize recovery delays with automated system shutdown. MopUPS monitors the UPS for power failure, low battery or other events that jeopardize computer power and initiates controlled system shutdown.
- **Safe Network Shutdown** — Multiple computers on a shared power source also need to share power status information to enable safe shutdown of all systems. MopUPS offers several architectures that deliver flexibility, simplicity and reliability in network-based shutdown.
- **Remote Messaging** — MopUPS keeps you informed anywhere. Fault and recovery messages are sent via network, email, pager or SNMP trap.
- **Remote Management** — Site power and UPS status information can be accessed securely from any computer on your IP-based network. View event history and voltage logs for trend analysis. View UPS system status in real time for situational decision support. Access is based on User Authentication with 128bit, MD5 encryption.

**AUSTRALIA**

Chloride Hytek  
Unit CIA & CIB  
Centrecourt Business Park  
25-27 Paul Street North  
NORTH RYDE NSW 2113  
Australia  
Telephone: +61 2 98881266  
Facsimile: +61 2 9888 1966  
[Australia.sales@chloridepower.com](mailto:Australia.sales@chloridepower.com)

**BRAZIL**

Chloride Power Protection  
Latin America  
Rua Arizona 1349, 6° Andar  
Brooklyn Novo  
Sao Paulo CEP 04567-002  
Brazil  
Telephone: +55 11 5505 4661  
Facsimile: +55 11 5505 4832  
[Latinamerica.sales@chloridepower.com](mailto:Latinamerica.sales@chloridepower.com)

**FRANCE**

Chloride Power Protection  
1 rue Felix Potin  
ZA Les Belles Vues  
91290 Arpajon  
France  
Telephone: +33 1 6926 1281  
Facsimile: +33 1 6083 1816  
[France.sales@chloridepower.com](mailto:France.sales@chloridepower.com)

Chloride Telecom Systems  
ZA Les Rolandières  
35120 Dol de Bretagne  
France  
Telephone: + 33 2 99 48 2068  
Facsimile: + 33 2 99 48 3394  
[Industrial.sales@chloridepower.com](mailto:Industrial.sales@chloridepower.com)

Chloride Industrial Systems  
30 Avenue Montgolfier - BP 90  
F-69684 Chassieu Cedex  
France  
Telephone: +33 4 7840 1356  
Facsimile: +33 4 7890 5890  
[Com-ce@saed.com](mailto:Com-ce@saed.com)

**GERMANY**

Masterguard  
Schallershofer Str. 141  
D-91056 Erlangen  
Germany  
Telephone: +49 9131 9855 100  
Facsimile: +49 9131 9855 270  
[info@masterguard.de](mailto:info@masterguard.de)

**ITALY**

Chloride Silectron  
Via Fornace 30  
40023 Castel Guelfo (BO)  
Italy  
Telephone: +39 0542 632 111  
Facsimile: +39 0542 632 120  
[Italy.sales@chloridepower.com](mailto:Italy.sales@chloridepower.com)

**PORTUGAL**

Chloride Power Protection  
Rua dos Terços 574  
Zona Industrial de Canelas  
4405 270 Canelas Vila Nova de Gaia  
Portugal  
Telephone: +351 22 7151 210  
Facsimile: + 351 22 7126 337  
[Portugal.sales@chloridepower.com](mailto:Portugal.sales@chloridepower.com)

**SINGAPORE**

Chloride Power Protection  
80 Marine Parade Road  
#10-08 Parkway Parade  
Singapore 449269  
Telephone: +65 6 348 5288  
Facsimile: +65 6 348 3400  
[asiapups@chloridepower.com](mailto:asiapups@chloridepower.com)

**SPAIN**

Chloride España, S.A.U.  
Edificio Europa III  
C/ San Rafael nº 1  
Pol. Ind. Alcobendas  
28108 Alcobendas  
Madrid  
Spain  
Telephone: +34 91 414 00 30  
Facsimile: +34 91 662 37 76  
[Spain.sales@chloridepower.com](mailto:Spain.sales@chloridepower.com)

**THAILAND**

Chloride Power Protection  
127/25 Panjathani Tower, 20th Floor  
Nonsee Road  
Chongnonsee, Yannawa  
Bangkok 10120  
Thailand  
Telephone: + 66 2 6810100  
Facsimile: +66 2 6810109  
[Thailand.sales@chloridepower.com](mailto:Thailand.sales@chloridepower.com)

**TURKEY**

Masterguard  
E-5 Bostanci Koprusu Kavşagi  
Sebnem Sokak № 10, Kat: 3-4-7-8  
81110 Bostanci - Istanbul  
Turkey  
Telephone: +90 216 464 47 00  
Facsimile: +90 216 464 47 15  
[masterguard@masterguard.com.tr](mailto:masterguard@masterguard.com.tr)

**UAE**

Chloride Power Protection Middle-East  
Union House, 5th Floor  
Port Saed Road  
PO Box 72536  
Dubai  
United Arab Emirates  
Telephone: +971 4 2115125  
Facsimile: +971 4 2115101

**UK**

Chloride Power Protection  
(Chloride World Headquarters)  
George Curl Way  
Southampton  
Hampshire, SO18 2RY  
United Kingdom  
Telephone: +44 (0) 23 8061 0311  
Facsimile: +44 (0) 23 8061 0852  
[Uk.sales@chloridepower.com](mailto:Uk.sales@chloridepower.com)

**Oneac UK**

18 & 20 Blacklands Way  
Abingdon Business Park  
Abingdon  
Oxfordshire OX14 1DY  
United Kingdom  
Telephone: +44 (0) 1235 534721  
Facsimile: + 44 (0) 1235 534197

**USA**

Oneac Corporation  
27944 North Bradley Road  
Libertyville  
Illinois 60048-9700  
USA  
Telephone: +1 847 816 6000  
Facsimile: +1 847 680 5124  
[info@oneac.com](mailto:info@oneac.com)

Chloride Power Protection  
28430 N. Ballard Drive  
Lake Forest  
Illinois 60045  
USA  
Telephone: +1 800 239 2257  
Facsimile: +1 800 833 6829  
[info@oneac.com](mailto:info@oneac.com)

# CHLORIDE

## POWER PROTECTION

[www.chloridepower.com](http://www.chloridepower.com)



ISO 9001



Cert. No FM 10144

This publication is for information purposes only. The company has a policy of continuous product improvement and therefore reserves the right to vary any information quoted herein without prior notice.

MKA3SW0UKSOFT  
REV2/09-2002